



# CPY SERIES

LED CANOPY & SOFFIT LUMINAIRE

Lighting the way to your site and maximum savings

**CREE**  TM









**LED Canopy & Soffit Luminaire**

# LIGHTING THAT SUCCEEDS ON MANY DIFFERENT LEVELS.

## **OUTSTANDING PERFORMANCE**

Capable of saving more than 68 percent energy compared to traditional source technologies and 35 percent compared to first generation LED, the CPY250® canopy luminaire also provides improved lighting quality that contributes to creating a safe and inviting site.

## **SIMPLE INSTALLATION**

Designed for ease of installation and versatility, the CPY Series seamlessly mounts to virtually any canopy. The pendant mount is also available to expand the application range.

## **EXCEPTIONAL RELIABILITY**

Designed and assembled right here in the U.S.A., the CPY Series is built to provide more than a decade of near maintenance-free service. And it's backed by our industry leading 10-year limited warranty.



**Drop Lens**



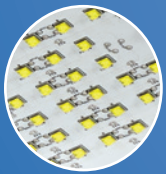
**Flat Lens**

# DRAMATIC LIGHTING, OPERATIONAL SAVINGS.

By blending technological innovation with architectural aesthetics, the CPY250® LED Canopy Luminaire achieves superior illumination performance with a low total cost of ownership and dramatically better visibility.

## DROP LENS

- Molded glass with prismatic contours
- Increased customer visibility of the site
- Helps in delivering a comfortable safe visual environment



## STATE-OF-THE-ART CREE LEDs

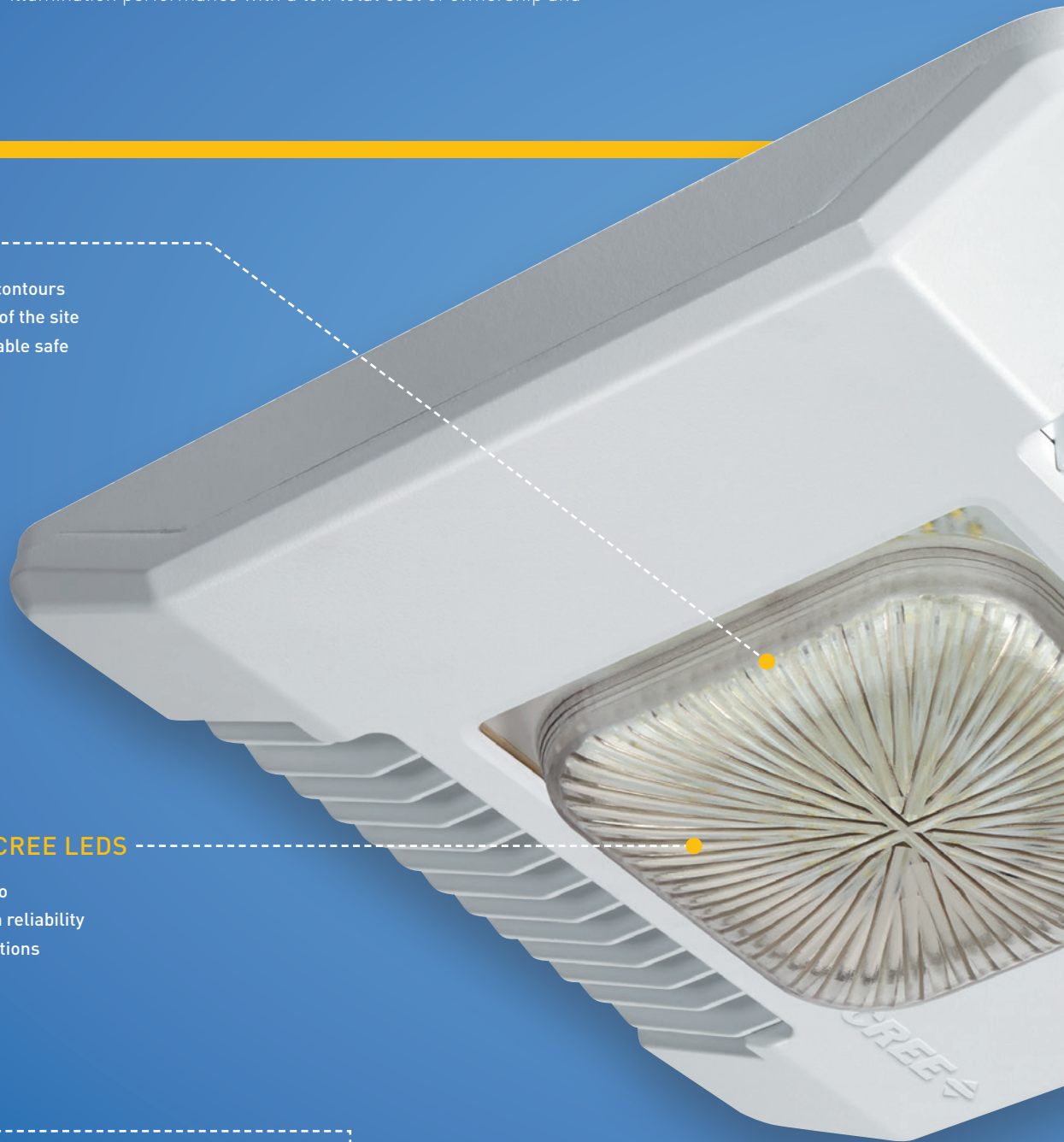
- Industry-leading LED portfolio
- High performance and proven reliability
- Optimized for lighting applications



*CPY250 with flat lens and tempered textured glass*

## OPTIONAL MULTI-LEVEL

- Reduced light levels and energy costs when the coverage area is vacant
- Ambient and occupancy control
- Field adjustable



### QUICK AND RELIABLE INSTALLATION

- Integrated driver
- Self-sealing screws
- Mounts to virtually any canopy deck

### SUPERIOR THERMAL MANAGEMENT

- High performance heat sink
- Improves lumen performance and reliability

### AVAILABLE MOUNTING OPTIONS



#### DIRECT MOUNT (DM)

Mounts directly to the canopy deck in a 2.0" (51mm) to 4.0" (102mm) round hole and is secured in place with self-sealing screws.



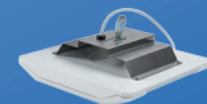
#### PENDANT MOUNT (PD)

Includes cord and J-box.



#### PENDANT MOUNT (PD)

Shown with optional pendant kit.



#### HOOK AND CORD (HC)

Provided with spring lock hook for mounting.






# BEAUTIFUL AESTHETICS, RUGGED CONSTRUCTION.

The CPY Series delivers up to 20,080 lumens of beautiful, high-quality light with superior efficiency. With rugged cast aluminum construction and an integral heat sink, the CPY250® LED Canopy/Soffit luminaire can withstand the most challenging outdoor environments. Available with a flat or 1" prismatic drop lens, the luminaire provides two aesthetics to meet visual and illumination performance needs. The slim, low profile design enhances curb appeal, while offering seamless installation.

PERFORMANCE SUMMARY
Made in the U.S.A. of U.S. and imported parts
<b>CRI:</b> Minimum 70 CRI
<b>CCT:</b> 3000K (+/- 300K), 4000K (+/- 300K), 5700K (+/- 500K)
<b>Delivered Light Output:</b> 4,210 to 20,080 lumens
<b>System Watts:</b> 31W, 60W, 82W, 85W, 96W, 140W, 145W
<b>Dimming:</b> 0-10V dimming control
<b>Input Voltage:</b> 120-277V, 347-480V, 347V or 480V
<b>Mounting:</b> Direct, Pendant or Hook & Cord
<b>Limited Warranty:</b> 10 years on luminaire / 10 years on Colorfast DeltaGuard® finish*
IP66 Rated (Direct Mount only)
Class I, Division 2 Hazardous Location for select models



APPLICATIONS	
	<p><b>Petroleum &amp; Convenience Store</b> Stand out in the crowd. A well-lit canopy and car wash can be inviting for potential customers. Welcome them with a visually appealing site that leads to a greater success in the C-store.</p>
	<p><b>Banks</b> The CPY Series ensures exterior canopies, drive-thrus and ATMs are always brightly illuminated, so customers feel completely secure using them. Dimming control options allow you to save more energy during low-traffic periods to help boost your bottom line.</p>
	<p><b>Education</b> Extreme measures are taken to ensure the safety of students in classrooms, but is your campus as secure as it could be? The CPY Series welcomes students and visitors with evenly illuminated overhangs and outdoor hallways that foster a sense of well-being.</p>

ORDERING INFORMATION								
Example: CPY250-B-DM-B-A-UL-WH								
Product	Version	Mounting	Optic	Input Power Designator	Voltage	Color Options	CCT	Options
CPY250	B	<b>DM</b> Direct <b>PD</b> Pendant <b>HC</b> Hook & Cord	<b>D</b> 0.91" (23mm) Drop Lens <b>F</b> Flat Lens	<b>A</b> 60W <b>B</b> 96W <b>C</b> 31W <b>E</b> 145W <b>F</b> 85W	<b>UL</b> Universal 120-277V <b>UH</b> Universal 347-480V - Available with B, E & F input power designators only <b>34*</b> 347 - A & C input power designators <b>48*</b> 480V - A & C input power designators	<b>BK</b> Black <b>BZ</b> Bronze <b>SV</b> Silver <b>WH</b> White	<b>30K</b> 3000K <b>40K</b> 4000K <b>57K</b> 5700K	<b>DIM</b> 0-10V Dimming <b>HZ</b> Class I, Div. 2 Hazardous Location Certification <b>K</b> NSF 2 Certification <b>PML</b> Programmable Multi-Level

## CONSTRUCTION & MATERIALS

- Slim, low profile design
- Easy mounting and servicing from below the deck
- Luminaire housing is constructed of rugged cast aluminum with integral heat sink specifically designed for LED
- Flat lens is 0.125" tempered Solite® glass
- Drop lens is 0.157" molded borosilicate glass
- Direct mount is suitable for use in single or double skin canopies
- Hook and cord mount includes a 3' (0.91m) cord out of the luminaire and is intended to hang from the single hook
- Standard pendant mount includes a mounting bracket and a J-Box for customer wiring and is intended to be mounted by 3/4 IP pendant (by others)
- Hazardous location pendant mount has a threaded hub which accepts 3/4" NPT conduit (by others) and secures with a 1/4"-20 set screw
- Exclusive Colorfast DeltaGuard® finish in black, bronze, silver and white
- **Weight:** 12.5 lbs. (5.7kg)

## ELECTRICAL SYSTEM

- **Input Voltage:** 120-277V or 347-480V, 50/60Hz, Class 1 drivers
- **Power Factor:** > 0.9 at full load
- **Total Harmonic Distortion:** < 20% at full load
- Integral 6kV surge suppression protection standard
- When code dictates fusing, a slow blow fuse or type C/D breaker should be used to address inrush current

## CONTROLS

- Continuous dimming to 10% with 0-10V DC control protocol
- 10V Source Current: 0.15mA

## REGULATORY & VOLUNTARY QUALIFICATIONS

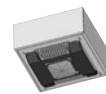
- cULus Listed
  - Suitable for wet locations when ordered with DM mount
  - Suitable for damp locations when ordered with HC and PD mounts
  - Suitable for wet locations when ordered with PD mount and HZ option
  - Enclosure rated IP66 per IEC 60529 when ordered with DM mount
  - Consult factory for CE Certified products
  - 6kV surge suppression protection tested in accordance with IEEE/ANSI C62.41.2
  - Meets FCC Part 15, Subpart B, Class A standards for conducted and radiated emissions
  - Luminaire and finish endurance tested to withstand 5,000 hours of elevated ambient salt fog conditions as defined in ASTM Standard B 117
  - Meets Buy American requirements within ARRA
  - RoHS compliant. Consult factory for additional details
  - Class I, Division 2 Hazardous Location rated when ordered with the DM or PD mount and the HZ option. Not available with DIM, NSF or PML options
  - NSF Certified when ordered with DM mount. Not available with HZ or PML options
  - DLC and DLC Premium qualified versions available
- Footnote: See specification sheet for complete technical information

## ACCESSORIES

### DIRECT MOUNT - CANOPY UPGRADE KITS

Used when replacing HID luminaires in existing open canopies.

- XA-BXCCMW** - for use with Jet-Phillips canopy luminaires
- XA-BXCCNW** - for use with ElSCO Franciscan canopy luminaires
- XA-BXCCPW** - for use with LSI Dakota or Masters canopy luminaires
- XA-BXCCQW** - for use with Whiteway Riviera or Rig-A-Lite canopy luminaires
- XA-BXCCRW** - for use with ElSCO Merrit canopy luminaires
- XA-BXCCSW** - for use with LSI Richmond or Whiteway Civic canopy luminaires



### DIRECT MOUNT - JUNCTION BOX / STEM KIT

**XA-BXCCJBOX** - 6.0" (152mm) H x 3/4" (19mm) NPT Stem



### DIRECT MOUNT - BEAUTY PLATE

Metal plate used when replacing surface-mounted HID luminaires. Painted Colorfast DeltaGuard® white.

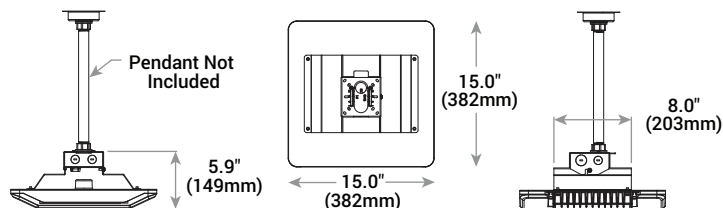
- XA-BXCCBPW** - Square 26"
- XA-BXCCBPB12W** - Beauty Plate w/ 12" (305mm) Backer
- XA-BXCCBPB16W** - Beauty Plate w/ 16" (406mm) Backer



### HAND-HELD REMOTE

**XA-SENSREM** - For successful implementation of the programmable multi-level option, a minimum of one hand-held remote is required.

## PENDANT MOUNT

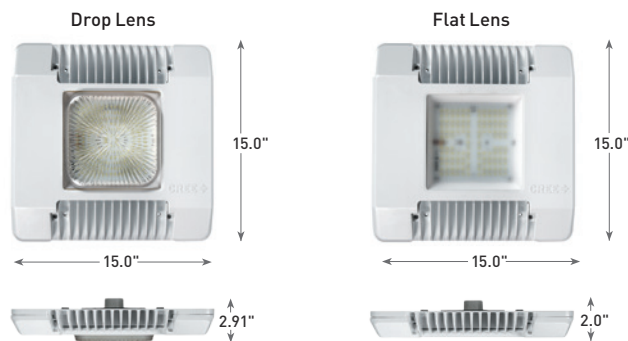


### PENDANT MOUNT KITS

Pendant height from ceiling surface to bottom of fixture; mounting accessories or surface boxes will add to overall height.

Kit Name	Height
<b>XA-PS12KIT*</b>	5" (127mm)
<b>XA-PS18KIT*</b>	11" (279mm)
<b>XA-PS22KIT*</b>	15" (381mm)

## CPY250® Canopy/Soffit Luminaire



Visit [lighting.cree.com](http://lighting.cree.com) or contact a Cree lighting representative to learn more.

© 2017 Cree, Inc. All rights reserved. For informational purposes only. Not a warranty or specification.  
See [lighting.cree.com/warranty](http://lighting.cree.com/warranty) for warranty and specifications. Cree®, CPY250® and Colorfast DeltaGuard® are registered trademarks and the Cree logo is a trademark of Cree, Inc. CAT/BRCH- C023 Rev. Date: 08/04/2017

